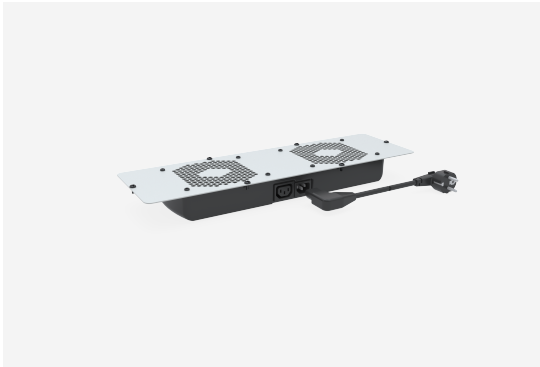




FPME FAN PACKAGE

FPME-G



**FPME FAN PACKAGE****FPME-G**

NAMN	FPME-G	PRODUKT EAN	7330701030345
ART. NR	56950	ETIM	EC000320
ENUMMER	2507989	TULL TARIFKOD	94039910
BREDD	600 MM		
DJUP	145 MM		
FÄRG	GREY		
URSPRUNGLAND	SWEDEN		

Teknisk information och certifikat

- Fan package with 2 fans.
- FPME with built-in thermostat and Schuko-C13 Cable (length 2 m).
- Surface treatment, textured grey RAL 7035.

FAN

Type: Axial

Rated voltage: 230V/50Hz

Speed: 1650 laps/min

Power consumption: 16W

Capacity max: 169 m³/h (Static pressure=0 Pa)

Capacity nominal: 118 m³/h (70% of max.)

Working range: -10° to 70°C

THERMOSTAT

Type: Bimetal with low hysteresis



Switching capacity: 16A (240 VAC resistive load)

Tolerance: +/-4K

Differential: 8+/-2K

Setting range: 0° to 60°C