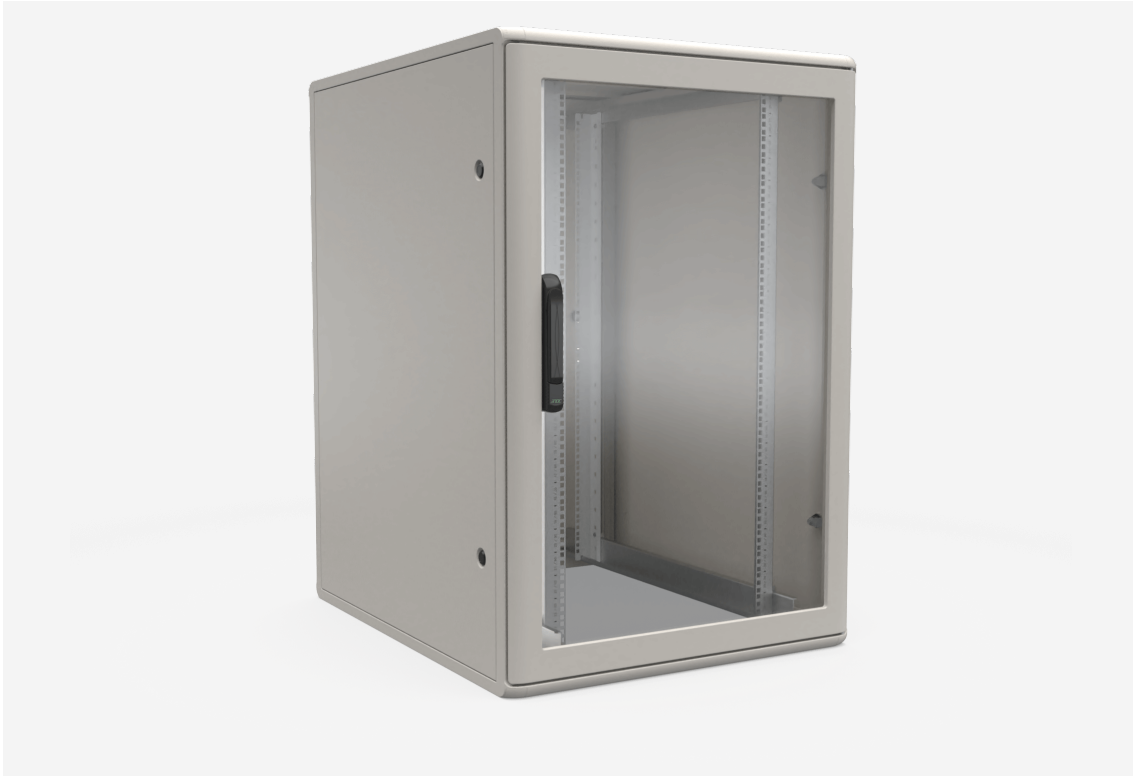




F1 IT ENCLOSURE 19"

F1 81010



**F1 IT ENCLOSURE 19"****F1 81010**

NAMN	F1 81010	PRODUKT EAN	7330701085086
ART. NR	55709	ETIM	EC002499
ENUMMER	2500505	TULL TARIFKOD	94032080
BREDD	800 MM		
DJUP	1000 MM		
HÖJD	1000 MM		
FÄRG	BEIGE		
URSPRUNGLAND	SWEDEN		

Teknisk information och certifikat

- Screw-assembled frame with aluminium profiles and die-cast zinc corners. The frame has two integrated vertical screw pockets in each corner profile for universal mounting of accessories.



- Frame can be dismantled by means of screws.
- Finish: textured Enoc System Beige.
- Ingress protection class IP20
- Maximum static load 1,500 kg.
- Front door is made of 4 mm smoke-coloured safety glass built into an aluminium frame. LS 95 ergonomic locking handle with C101 safety cylinder. Can be adapted for other lock systems.
Integrated quick lock system allows door to be removed without use of tools. Door opening angle >180° in single enclosure configuration. Right-hinged, can be re-hung to be left-hinged.
- Rear door made of 1 mm sheet steel built into an aluminium frame. LS 38 lock with C101 safety cylinder.
Integrated quick lock system allows door to be removed without use of tools. Door opening angle >180° in single enclosure configuration. Right-hinged, can be re-hung to be left-hinged.
- Sheet steel side panels, easy to detach and lockable from inside. Integrated handle for easier handling.
- The top consists of replaceable modular panels. One panel has cable glands with brush strip on the back and the rest are cover plates. Can be replaced with ventilation panels, fan packages or panels with integrated cable glands. All modules can be rotated 90° and assembled with the cable glands on the left and/or right side. The U-shaped panel with integrated cable glands makes it easy to move pre-existing installations into the enclosure.
- The base is open, but can be fitted with cover plate/ base plate packages.
- The 19" profiles can be steplessly repositioned through the depth of the enclosure. The depth profiles have markings for precise positioning. The 19" profiles are numbered in height units.
- The whole 19" assembly can be moved right or left to an off-centre position.

Leveransbeskrivning

Locking handle LS 95 with safety cylinder C101.

4 keys C101.

Assembled with 2 19" profiles

Central grounding Point M5 in the corner post.