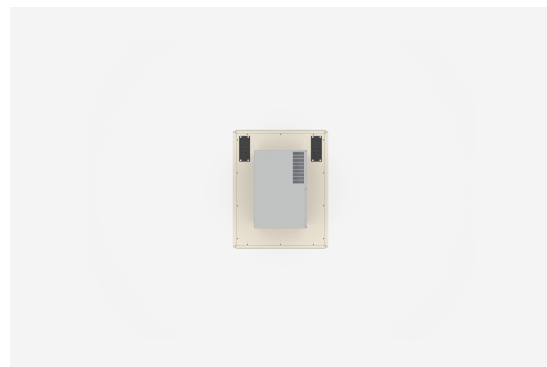
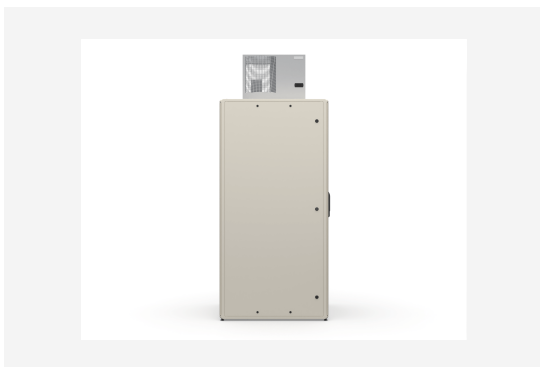




FS1 FLOOR CABINET 19" IP 54

FS1 81020 TC 14-20



**FS1 FLOOR CABINET 19" IP 54****FS1 81020 TC 14-20**

NAMN	<b>FS1 81020 TC 14-20</b>	PRODUKT EAN	<b>7330701038112</b>
ART. NR	<b>57612</b>	ETIM	<b>EC002499</b>
ENUMMER	<b>2501247</b>	TULL TARIFKOD	<b>94032080</b>
BREDD	<b>800 MM</b>		
DJUP	<b>1000 MM</b>		
HÖJD	<b>2000 MM</b>		
FÄRG	<b>BEIGE</b>		
URSPRUNGLAND	<b>SWEDEN</b>		

**Teknisk information och certifikat**

- Ingress protection class IP54. Sealing around front and back door, side panels, roof and bottom.



- Screw-assembled frame with aluminium profiles and die-cast zinc corners. The frame has two integrated vertical screw pockets in each corner profile for universal mounting of accessories.
- Central grounding point M5 in the corner post.
- Surface treatment, textured beige or black RAL 9005. Other colours on request.
- Maximum static load 1.500 kg.
- Front door made of 4 mm smoke-coloured safety glass built into an aluminium frame. LS 95 ergonomic locking handle with C101 safety cylinder. Can be adapted for other lock systems. Integrated quick lock system allows door to be removed without use of tools. Door opening angle >180° in single enclosure configuration. Right-hinged, can be re-hung to be left-hinged.
- Back door made of 1 mm sheet steel built into an aluminium frame. Other similar to front door.
- Sheet steel side panels, easy to detach and lockable from inside. Can be ordered with pre-cut holes for side coolers SC 14, SC 20 or SC 30.
- Bottom panel in single sheet steel plate. Cable entrance flange FL21 in rear left and right. Each flange with possibility to fit 2 cables Ø 8-17 mm, 2 cables Ø 6-13 mm, 2 cables Ø 5-10 mm and 20 cables Ø 4-10 mm.
- Top panels can be ordered with pre-cut holes for top coolers TC 14, TC 20, TC 28 or TC 41.
- The 19" profiles can be steplessly repositioned through the entire depth of the enclosure. The depth profiles have markings for precise positioning. The 19" profiles are numbered in height units. Each Fs1 contains two pairs of 19" profiles. One pair is pre-installed at a depth of 100 mm from the front of the enclosure and the other pair is pre-installed further in at 540 mm (for the 800 mm depth) or 740 mm (for the 1000/1200 mm depth).