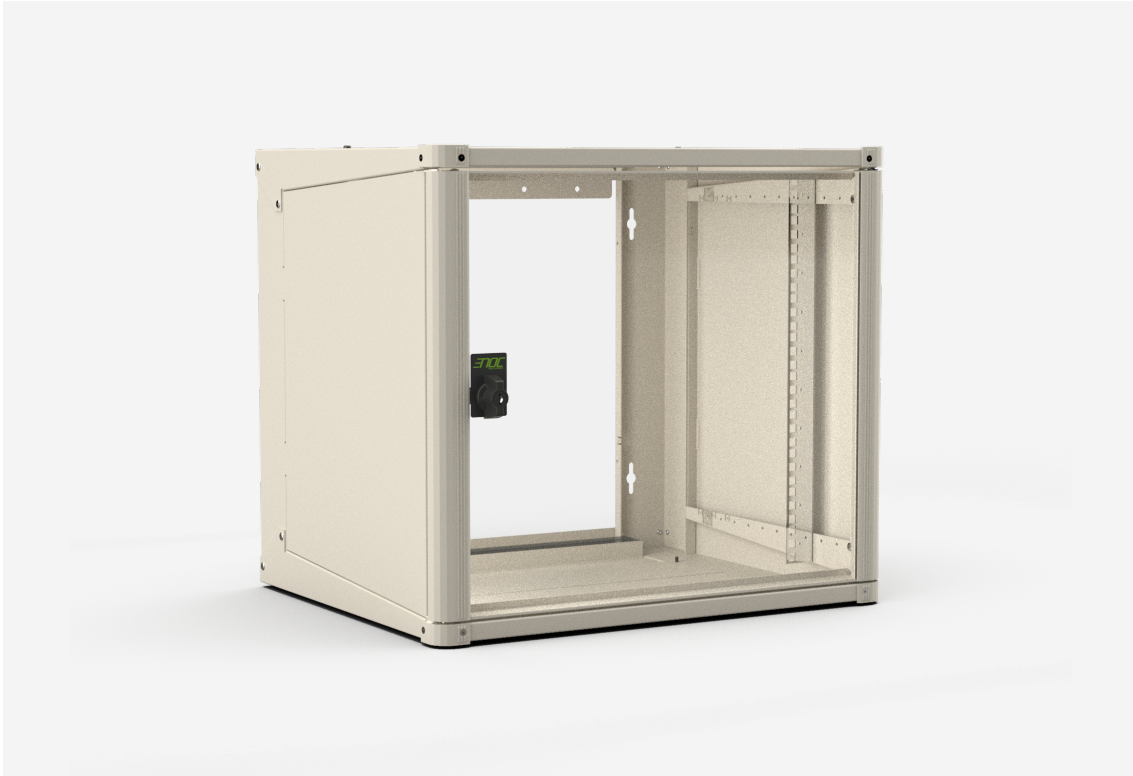




NSVE WALL CABINET  
NSVE 214





## NSVE WALL CABINET

# NSVE 214

NAME	<b>NSVE 214</b>	PRODUKT EAN	<b>7330701071638</b>
ART.NR	<b>53824</b>	ETIM	<b>EC002500</b>
EAN	<b>2511832</b>	TULL TARIFKOD	<b>94032080</b>
BREITE	<b>565 MM</b>		
TIEFE	<b>465 MM</b>		
HÖHE	<b>999 MM</b>		
FARBE	<b>BEIGE</b>		
HERKUNFTSLAND	<b>SWEDEN</b>		

## Technische Informationen

---

- Made of sheet steel, aluminium profiles and die-cast zinc corner pieces.
- Finish: Enoc System textured beige.
- Glass or metal door. Glass door is made of smoke-coloured safety glass, metal door is made of sheet steel.  
Doors reinforced with aluminium profiles and sheet steel.
- Door opening angle 180°.
- Locking knob LS 15 with standard lock cylinder for key C101.
- Sheet steel side panels, easy to detach, fixed with a screw from the inside.
- The top and bottom have a new larger adjustable cable gland with a foam plastic seal. Knock-out panel can be replaced with ventilation plates (VPE) or fan packages (FPME).
- One pair of 19-inch profiles (482.6 mm) pre-fitted 110 mm in from the enclosure front, can be repositioned at 30 mm intervals through half the depth of the enclosure.
- Extra pair of 19 profiles available as accessory.
- Supplied with cover panel (TPA) installed in the 19-inch profiles. (Does not apply to 6HU.)
- Back/mounting panel (BS NSVE) available as accessory.
- Wall attachment profile for quick wall installation.
- Maximum static load 50 kg.
- Ingress protection class IP 20.