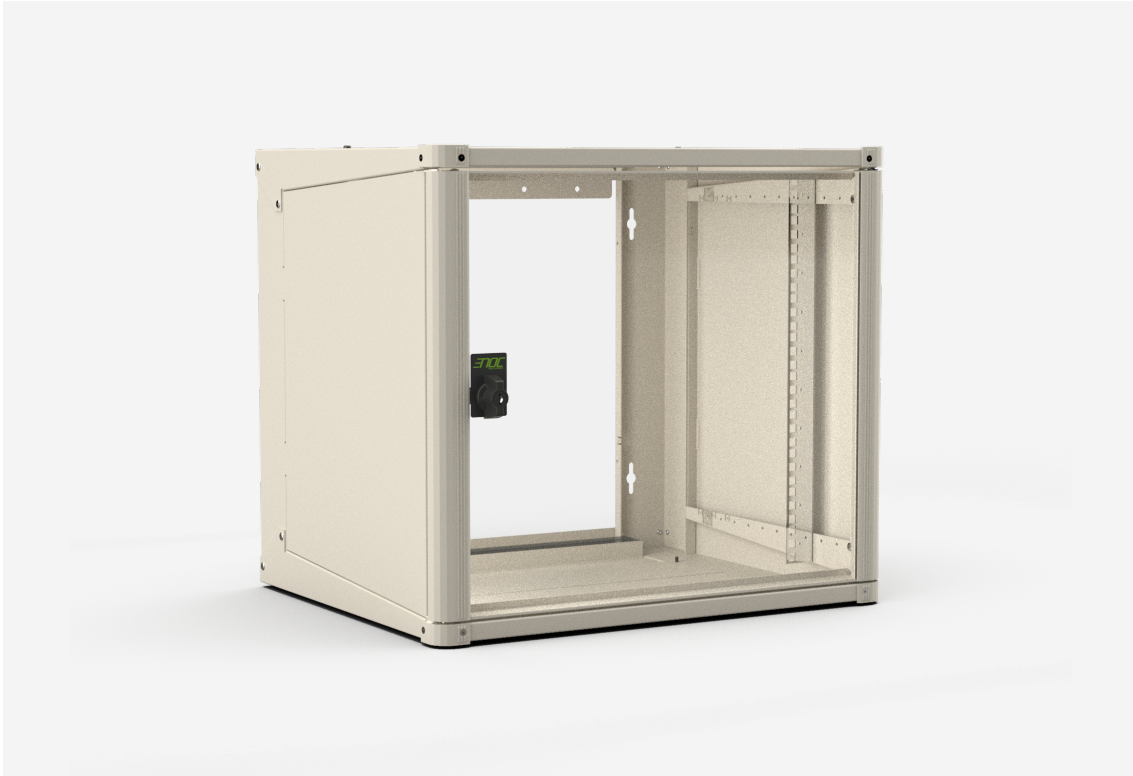




NSVE WALL CABINET
NSVE 218





NSVE WALL CABINET

NSVE 218

NAMN	NSVE 218	PRODUKT EAN	7330701072031
ART. NR	53884	ETIM	EC002502
ENUMMER	2500896	TULL TARIFKOD	94032080
BREDD	565 MM		
DJUP	800 MM		
HÖJD	999 MM		
FÄRG	BEIGE		
URSPRUNGLAND	SWEDEN		

Teknisk information och certifikat

- Made of sheet steel, aluminium profiles and die-cast zinc corner pieces.
- Finish: Enoc System textured beige.
- Glass or metal door. Glass door is made of smoke-coloured safety glass, metal door is made of sheet steel.
Doors reinforced with aluminium profiles and sheet steel.
- Door opening angle 180°.
- Locking knob LS 15 with standard lock cylinder for key C101.
- Sheet steel side panels, easy to detach, fixed with a screw from the inside.
- The top and bottom have a new larger adjustable cable gland with a foam plastic seal. Knock-out panel can be replaced with ventilation plates (VPE) or fan packages (FPME).
- One pair of 19-inch profiles (482.6 mm) pre-fitted 110 mm in from the enclosure front, can be repositioned at 30 mm intervals through half the depth of the enclosure.
- Extra pair of 19 profiles available as accessory.
- Supplied with cover panel (TPA) installed in the 19-inch profiles. (Does not apply to 6HU.)
- Back/mounting panel (BS NSVE) available as accessory.
- Wall attachment profile for quick wall installation.
- Maximum static load 50 kg.
- Ingress protection class IP 20.

Leveransbeskrivning



Locking knob LS 15 with saftey cylinder C101.

2 keys C101.

2 19 profiles.