

NEW!



ENOC CT CABLE TRAY SYSTEM GENERATION 2

SMART AND EFFICIENT CABLE HANDLING



WIDE RANGE
Premium, Basic
& Economy

QUALITY
Metal tray with plastic
fingers and metal lid

FOUR SIZES
Available in 21, 26, 42
& 47HU version

FAST DELIVERY
Available for immediate
delivery

Enoc CT G2 is a wide range, high end cable management system, designed for easier organizing and handling of large volumes of cables. It fits in the 19" profile of our F1, S1 and F3 enclosure. Its wide range gives you a premium model with many functions and possibilities down to basic and economy models where economy is important without sacrificing quality. Enoc CT gives you cable management solutions and accessories that best meet your different needs. Because at Enoc we are committed to finding the solution that best fits you. That is why we call it "The Enoc Way".

ENOCSYSTEM.COM

ENOC

DETAILS MAKE THE DIFFERENCE



TECHNICAL INFORMATION CT CABLE TRAY SYSTEM G2



THE ENOC CABLE TRAY SYSTEM MEETS YOUR DIFFERENT NEEDS

CT1 G2 Cable Tray Vertical with premium functions and possibilities.

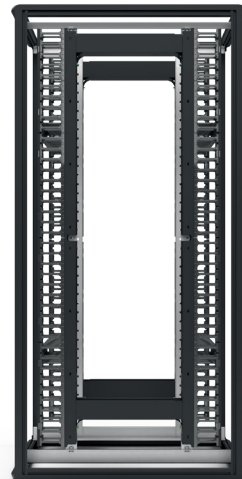
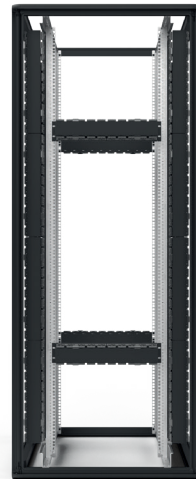
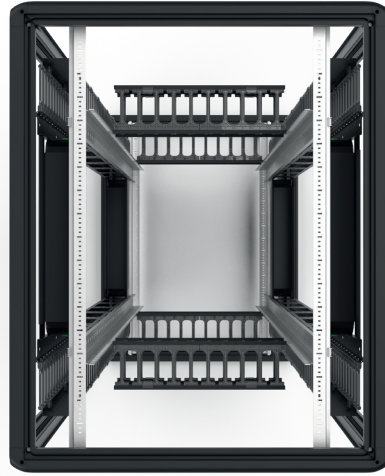
CT3 G2 Cable Tray Vertical with basic functions, delivered as a pair.

CT5 G2 Cable guide without tray, delivered as a pair.

CTH G2 Cable Tray Horizontal. 19" 2HU cable tray.

CTD S Cable Tray Depth, size small. For supporting cables in the depth direction.

CTD L Cable Tray Depth, size large. For supporting cables in the depth direction.





PREMIUM - CT1 G2

Premium vertical cable tray. Fits on the left and right side of the 19" profile in F1, S1 and F3 enclosure.

- Metal tray with plastic fingers and metal lid.
- Available in 21, 26, 42 and 47HU version.
21, 26HU version with 2 lids and 42, 47HU version with 4 lids.
- Lids are hinged both left and right. They can also be removed completely.
- Back of tray has openings for cables going in the depth direction. It is also equipped with holes for cable holders.
- 42 and 47HU versions are divided into 2 parts, which can be placed individually.
- Possible to fit CTD S/L in the back of the tray.
- Cage nut fixing in 19" profile (not included).
- Delivered 1 pc.



TECHNICAL DATA

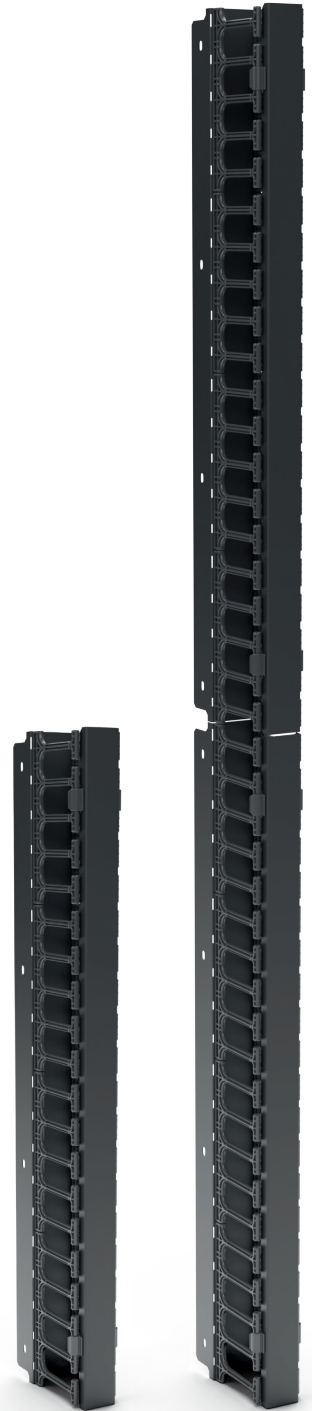
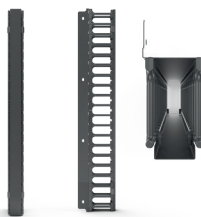
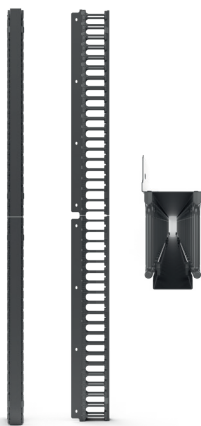
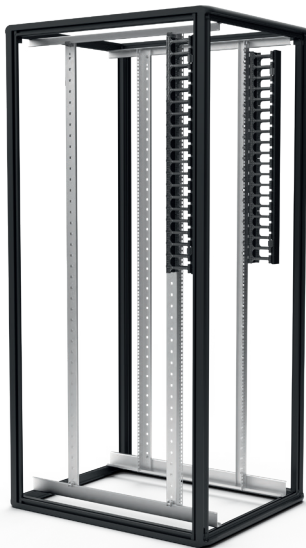
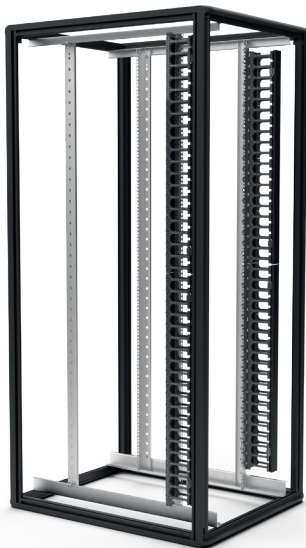
NAME	ART. NO.	EAN	E NUMBER	W x D x H (mm)	MIN. CABINET HEIGHT
CT1 21 G2	56973	7330701106132	2506313	88 x 167 x 888	1200 mm (24 HU)
CT1 26 G2	56974	7330701106149	2506314	88 x 167 x 1110	1400 mm (29 HU)
CT1 42 G2	56975	7330701106156	2506315	88 x 167 x 1777	2000 mm (42 HU)
CT1 47 G2	56976	7330701106163	2506316	88 x 167 x 1999	2200 mm (47 HU)



Basic – CT3 G2

Basic vertical cable tray. Fits on the left and right side of the 19" profile in F1, S1 and F3 enclosure.

- Metal tray with plastic fingers and metal lid.
- Available in 21HU and 42HU version.
- Lid is hinged on both left and right. It can also be removed completely.
- 42HU version is divided into 2 parts, which can be placed individually.
- Cage nut fixing in 19" profile (not included).
- Delivered 1 pc.



TECHNICAL DATA

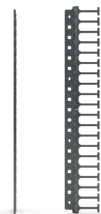
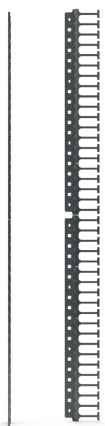
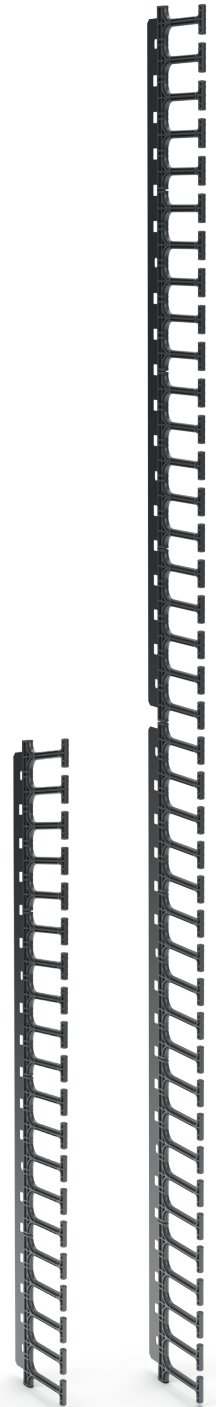
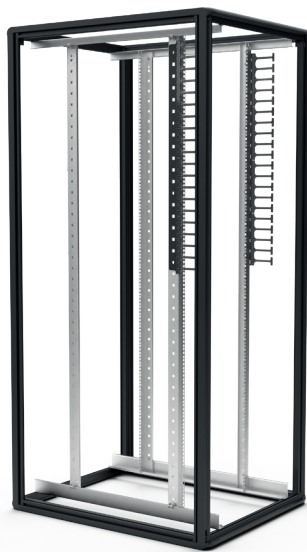
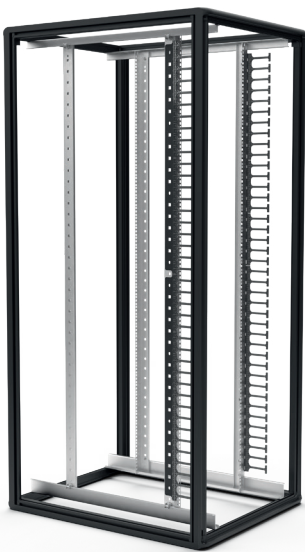
NAME	ART. NO.	EAN	E NUMBER	W x D x H (mm)	MIN. CABINET HEIGHT
CT3 21 G2	56979	7330701106194	2506317	72 x 165 x 888	1200 mm (24 HU)
CT3 42 G2	56981	7330701106217	2506318	72 x 165 x 1777	2000 mm (42 HU)



ECONOMY - CT5 G2

Economy vertical cable manager without tray.
Fits on the left and right side of the 19" profile in F1, S1 and F3 enclosure.

- Metal holder with plastic fingers.
- Available in 21, 26, 42 and 47HU version.
- 42 and 47HU versions are divided into 2 parts, which can be placed individually.
- Cage nut fixing in 19" profile (not included).
- Delivered 1 pc.



TECHNICAL DATA

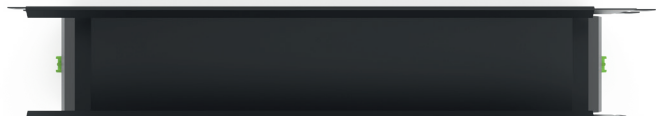
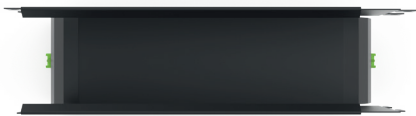
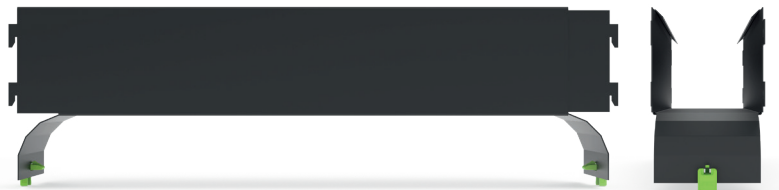
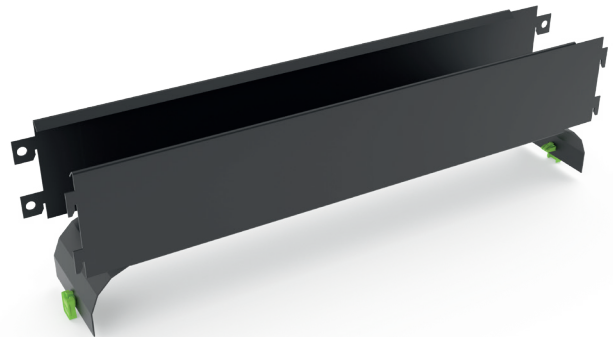
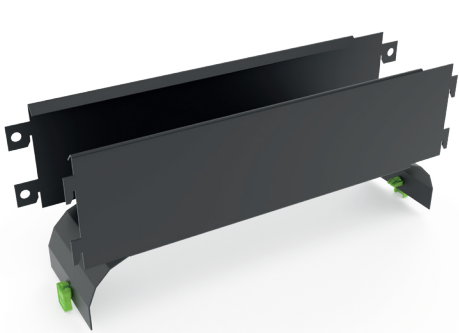
NAME	ART. NO.	EAN	E NUMBER	W x D x H (mm)	MIN. CABINET HEIGHT
CT5 21 G2	56984	7330701106248	2506319	13 x 151 x 888	1200 mm (24 HU)
CT5 26 G2	56985	7330701106255	2506320	13 x 151 x 1110	1400 mm (29 HU)
CT5 42 G2	56986	7330701106262	2506321	13 x 151 x 1777	2000 mm (42 HU)
CT5 47 G2	56987	7330701106279	2506322	13 x 151 x 1999	2200 mm (47 HU)



CTD S/L

Cable tray depth. For supporting cables in the depth direction. Either between two CT1:s or between one CT1 and a 19" profile.

- Stepless adjustable depth.
- Available in two sizes.
- CTD S, 300–450 mm depth.
- CTD L, 450–700 mm depth.
- Tool-free fixing in CT1.
- Cage nut fixing in 19" profile (not included).
- Bend radius control built in.



TECHNICAL DATA

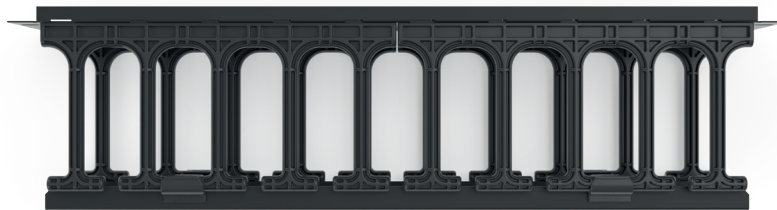
NAME	ART. NO.	EAN	E NUMBER	W x D x H (mm)	ADJUSTABLE
CTDS	56896	7330701093951	2501240	86 x 300 x 132	300-450 mm
CTDL	56897	7330701093968	2501241	86 x 450 x 132	450-700 mm



CTH G2

Cable tray horizontal. 19" 2HU cable tray using the same components as CT1.

- Metal tray with plastic fingers and metal lid.
- 2HU, 19" fixing.
- Lid is hinged both top and bottom and can be removed completely.



TECHNICAL DATA

NAME	ART. NO.	EAN	E NUMBER	W x D x H (mm)	HU
CTH G2	56991	7330701106316	2506323	482 x 127 x 88	2 HU